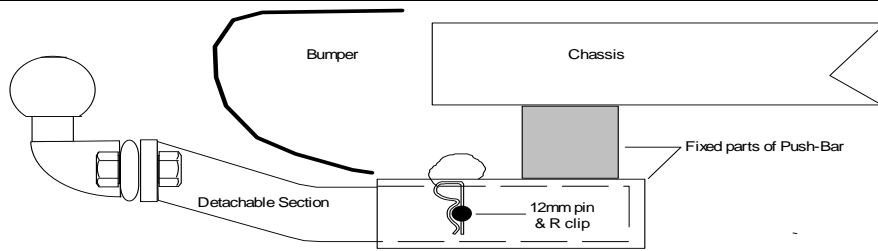


## FRONT TOWBAR APPLICATION & PRICE LIST - JAN 2016



The pin is 12mm HT grade 8.8 with a shear at 9.05 tonnes  
Please check before use

Front Push-Towbars are designed to help the manoeuvring of trailers and caravans into or out of tight spaces without the difficulties of reversing. **PLEASE SEE OUR WEBSITE FOR A SHORT DEMONSTRATION VIDEO** [www.watling-towbars.co.uk/front\\_towbars.html](http://www.watling-towbars.co.uk/front_towbars.html)  
 Most designs have a detachable (DT) section to provide a neat appearance. The detachable system is a simple drop nosed pin retaining a pullout square tube. **PLEASE NOTE: MANY BULL BARS ARE NOT COMPATIBLE WITH FRONT TOWBARS**

**ADVANTAGES:**

- \* **Detachable:** The front part of the Push-Bar is easily removed so that the front of your vehicle is kept neat and tidy.
- \* **Neat:** The main part of the Push-Bar is normally hidden.
- \* **Look See:** No more neck craning (or mind numbing) problems of which way to steer to miss that tree!
- \* **Manoeuvre:** Into tight corners with ease - its all in front of you.
- \* **Power:** Use the power of your vehicle, not your back or a 12v battery, to move your caravan, powerboat, horsebox, on grass, gravel or uphill.
- \* **Control:** Position double axle caravans with ease.
- \* **Special Designs:** For vehicles not on our standard list we can usually design and manufacture a 'one off' on your vehicle.
- \* **Easy to Use:** Quick to fit - simply remove the plastic bung, insert the detachable section, and secure with the Pin & R clip

**Key:** **B** cut = Bumper Cut **(i)** = invisible cut in the bumper **(v)** = visible cut in the bumper **(g)** = cut in the grill **(s)** cut in the sump shield  
 \* = centre receiver option not available Load kg = maximum trailer weight / nose weight

**Part numbers with a DT suffix have a detachable section to provide a neat appearance**

TYPE APPROVAL EC/94/20; The regulations DO NOT APPLY to:-

Front Towbars, Commercial Vehicles, Motorhomes registered before May 2012, Cars not (e) marked, Special Imports (SVA) and ALL vehicles registered before 1st. August 1998 **Please add VAT to prices on this list**

## A new range of Heavy Duty Front Towbars is now available

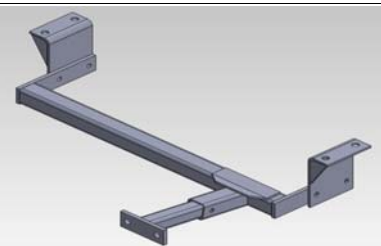
Shown below are the main differences between our standard and heavy duty front towbars

**Standard Front Towbars (FTB)**

Unless otherwise stated, the receiver is set to the left hand side of the vehicle. In most cases, an additional central receiver and/or right hand side receiver can be added (there are some exceptions).

The load/Kg capacity is set at the same as the standard rear towbar for the vehicle. eg 3200kg trailer / 100kg noseweight

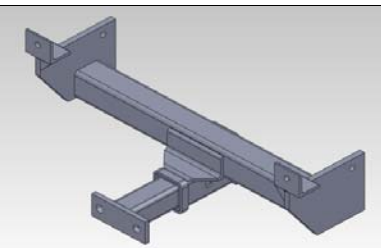
Many A-bars, Nudge-bars, Bull-bars are not compatible with front towbars.



**Heavy Duty Front Towbars (HD FTB)**

All have centrally mounted 2 inch (ID) receiver tubes. In most cases an additional left and/or right hand side receiver can be added.

The load/Kg capacity relates to the maximum stationary pull or push and vertical load. Heavy Duty Front Towbars have been designed for heavy duty moving (eg static caravans, large boat and commercial trailers), winches of up to 9500lb capacity, Meyer Products snow plough equipment and other applications. Many Bull-bars are not compatible with front towbars.



FRONT TOWBAR ACCESSORIES				load kg	Part No.	price £	B cut
Additional central or right hand receiver				As Towbar		30.00	
Receiver Mount Heavy Duty Winch Bracket				from 6000lb to 9500lb capacity		100.00	
Towball mount winch bracket - light duty				up to 4500lb capacity		65.00	
Towball mount winch bracket - heavy duty				from 6000lb to 7700lb capacity		95.00	
Towball and Watling cover				As Towbar		8.50	
Towtekta bumper protector - Black				n/a		4.50	
Towtekta bumper protector - Stainless Steel				n/a		10.00	
Spare / Replacement 50mm / 60mm bung				n/a		2.50	
Spare / Replacement 12mm / 16mm securing pin				n/a		10.00	

# FRONT TOWBARS

This list is updated at regular intervals so if your vehicle is not listed please phone to check.  
For very unusual vehicles we can design, manufacture and fit a special towing bracket.

BMW	series & vehicle notes	years	load kg	Part No.	price £	B cut
X5 4x4 Estate <b>FTB</b>	E53	2001 - 2007	2500/120	BMW27DT	145.00	(g)
X5 4x4 Estate <b>FTB</b>	E70	2007 - 2013	3500/140	PBMW28DT	145.00	(s)
CITROËN	series & vehicle notes	years	load kg	Part No.	price £	B cut
Xantia Hatchback <b>FTB</b>		May-93 - 2001	1500/85	PC25DT	140.00	(i)
Xsara Picasso <b>FTB</b>		2000 - 2010	1300/75	PC26DT	145.00	(g)
C-Crosser 4x4 Estate <b>FTB</b>	Centre receiver as standard. Can have LH added	Mar-07 -	2000/100	PC27DT	145.00	(s)
Relay Van & Chassis Cab <b>FTB</b>		1994 - Nov-06	2000/110	PP36ADT	150.00	
Relay Van & Chassis Cab <b>HD FTB</b>	Centre receiver only - no LH or RH option	2007 -	4500/250	PP47DT	275.00	(g)
DACIA	series & vehicle notes	years	load kg	Part No.	price £	B cut
Duster 2x4 & 4x4 Estate <b>FTB</b>		2012 -	1500/75	PDAC5DT	140.00	(g)
Duster 2x4 & 4x4 Estate <b>HD FTB</b>		2012 -	4500/250	PDAC4DT	250.00	(g)
DAIHATSU	series & vehicle notes	years	load kg	Part No.	price £	B cut
Fourtrak Independent <b>FTB</b>	F78	Jul-93 - 2003	3500/140	PDH10DT	140.00	
FIAT	series & vehicle notes	years	load kg	Part No.	price £	B cut
Ducato Van & Chassis Cab <b>FTB</b>		1994 - Nov-06	2000/110	PP36ADT	150.00	
Ducato Van & Chassis Cab <b>HD FTB</b>	Centre receiver only - no LH or RH option	2007 -	4500/250	PP47DT	275.00	(g)
FORD	series & vehicle notes	years	load kg	Part No.	price £	B cut
Focus Hatchback <b>FTB</b>		Oct-98 - Mar-05	1500/75	PF101DT	140.00	(g)
Mondeo Saloon, Hatchback & Estate <b>FTB</b>		Oct-96 - Oct-00	1800/75	PF89DT	140.00	
Mondeo Saloon, Hatchback & Estate <b>FTB</b>	inc. Platinum	Nov-00 - 2007	1800/75	PF90DT	140.00	(g)
Galaxy MPV <b>FTB</b>		2000 - 2006	2100/85	PF93DT*	140.00	(g)
Kuga Estate		2008 - Dec-12	2100/105	PF105DT	140.00	(g)
Transit Van & Chassis Cabs 'New Generation' <b>FTB</b>		Oct-91 - Mar-00	2000/75	PF67DT	140.00	
Transit Van & Chassis cab <b>FTB</b>		Oct-00 - Jun-06	2800/112	PF87DT	140.00	(i)
Transit Van & Chassis cab <b>FTB</b>		Jun-06 - 2014	2800/112	PF92DT	150.00	
Transit Van & Chassis cab <b>HD FTB</b>		Jun-06 - 2014	4500/250	PF102ADT	275.00	
Transit Van & Chassis Cab <b>FTB</b>	Series 5	2014 -	2800/112	PF107DT	140.00	
Transit Van & Chassis Cab <b>HD FTB</b>	Series 5	2014 -	4500/250	PF106DT	275.00	
Custom Van	Mk1	2012 -	2800/112	PF107DT	140.00	
Custom Van	Mk1	2012 -	4500/250	PF106DT	275.00	
Maverick 4x4 Estate <b>FTB</b>	(Terrano II type)	Jul-93 - 2001	2800/110	PDSN93DT	140.00	
Maverick Mk.2 4x4 Estate <b>FTB</b>	B4	2001 - 2004	1700/75	PF98DT	145.00	
Explorer 4x4 Estate <b>FTB</b>		Jan-97 - 2003	2800/110	PF88DT	140.00	
Ranger 2WD & 4x4 Pickup, XLT, Double Cab, Thunder <b>FTB</b>	UF1, UF8, UN8	1998 - 2012	2500/80	PMAZ39ADT	140.00	
Ranger 2WD & 4x4 Pickup, XLT, Double Cab, Thunder <b>HD FTB</b>	UF1, UF8, UN8	1998 - 2012	4500/250	PMAZ44ADT	250.00	
Ranger 2WD & 4x4 Pickup, Single & Double Cab <b>FTB</b>		Jan-12 -	3350/225	PF104DT	150.00	
Ranger 2WD & 4x4 Pickup, Single & Double Cab <b>HD FTB</b>		Jan-12 -	4500/250	PF103DT	275.00	
Freda / Frendy / Friendee MPV (Special Import) <b>FTB</b>	SGL3, SGL5, SGL11, SGLW2	1992? - 2005	1800/75	PMAZ40DT	140.00	
HONDA	series & vehicle notes	years	load kg	Part No.	price £	B cut
CR-V 4x4 Estate <b>FTB</b>	RD1	Jun-97 - Mar-02	1500/70	PHON45DT	140.00	
CR-V 4x4 Estate <b>FTB</b>	Mk2	Mar-02 - Dec-06	1500/100	PHON44DT*	140.00	(s)
CR-V 4x4 Estate <b>FTB</b>	Mk3	Jan-07 - Nov-12	2000/100	PHON50DT	140.00	
HYUNDAI	series & vehicle notes	years	load kg	Part No.	price £	B cut
Terracan 4x4 Estate <b>FTB</b>	NM81	2001 - 2008	2800/112	PHYD15DT	140.00	(s)
Terracan 4x4 Estate <b>FTB</b>	NM81 with oil cooler	2001 - 2008	2800/112	PHYD17DT	140.00	(s)
Tuscon 4x4 Estate <b>FTB</b>	JN81	2004 - 2010	1600/75	PHYD20DT	145.00	(si)
Santa Fé 4x4 Estate <b>FTB</b>	SC81	2001 - Mar-06	2300/92	PHYD16DT	140.00	
Santa Fé 4x4 Estate <b>FTB</b>	SH81	Apr-06 - 2012	2300/92	PHYD19DT	145.00	(si)
ISUZU	series & vehicle notes	years	load kg	Part No.	price £	B cut
Trooper 4WD Estate <b>FTB</b>	SWB & LWB	Jan-87 - Mar-92	3000/100	PIZU 2	120.00	
Trooper 4x4 Estate <b>FTB</b>	UBS69 with 705mm subframe width	Mar-92 - Apr-98	3300/120	PIZU 9DT	140.00	
Trooper 4x4 Estate <b>FTB</b>	UBS25 with 525mm subframe width	Mar-92 - Apr-98	3300/120	PIZU18DT	140.00	
Trooper 4x4 Estate <b>FTB</b>	UBS5, 26, 73	May-98 - 2003	3300/120	PIZU 8DT	140.00	
Pick-Up 4x4 & Crew Cab <b>FTB</b>	TFR, TFS	Oct-88 - 2003	3300/121	PIZU14DT	140.00	
Rodeo Denver Pick-Up 4x4 & Crew Cab <b>FTB</b>	TFS86 inc 2007 facelift	2003 - 2012	3300/120	PIZU15DT	140.00	
Rodeo Denver, D-Max Pick-Up 4x4 & Crew Cab <b>HD FTB</b>	TFS86 inc 2007 facelift	2003 - 2012	4500/250	PIZU19ADT	250.00	
D-Max Pick-up 4x4 & Double Cab <b>FTB</b> - Chassis series also TFS86 but it is a different chassis		2012 -	3000/120	PIZU21DT	145.00	
D-Max Pick-up 4x4 & Double Cab <b>HD FTB</b> - Chassis series also TFS86 but is a different chassis		2012 -	4500/250	PIZU20DT	250.00	
IVECO	series & vehicle notes	years	load kg	Part No.	price £	B cut
Daily Van & Chassis Cab <b>FTB</b>	35C	Oct-99 -	3500/250	PFO19DT	140.00	
Daily Van & Chassis Cab <b>FTB</b>	35C	2006 - 2012	4500/250	PFO21DT	275.00	
Daily Van & Chassis Cab <b>FTB</b>	40C & 50C	2006 - 2012	4500/250	PFO20DT	275.00	

# FRONT TOWBARS

This list is updated at regular intervals so if your vehicle is not listed please phone to check.  
For very unusual vehicles we can design, manufacture and fit a special towing bracket.

JEEP	series & vehicle notes	years	load kg	Part No.	price £	B cut
Wrangler 4x4 Estate <b>FTB</b>	TJ, 1J	1997 - 2007	2500/75	PAM34DT	140.00	
Wrangler 2 & 4 Door 4x4 Estate <b>FTB</b>	JK - Standard with centre receiver. LH can be added	2007 -	3500/170	PAM37DT	140.00	(s)
Wrangler 2 & 4 Door 4x4 Estate <b>HD FTB</b>	JK	2007 -	4500/250	PAM38DT	250.00	(s)
Cherokee 4x4 Estate <b>FTB</b>	(without nudge bar) XJ	Jan-88 - Aug-01	3300/130	PAM19DT	140.00	
Cherokee 4x4 Estate <b>FTB</b>	(without nudge bar)	Sep-01 - Aug-08	3300/130	PAM30DT	140.00	
Grand Cherokee 4x4 Estate <b>FTB</b>		Mar-94 - Sep-99	3300/130	PAM29DT	150.00	(i)
Grand Cherokee 4x4 Estate <b>FTB</b>		Oct-99 - Jul-05	3300/130	PAM31DT	140.00	
Grand Cherokee 4x4 Estate <b>FTB</b>	WK, WH (without nudge bar)	Jul-05 - May-11	3300/130	PAM35DT	140.00	
Commander 4x4 Estate <b>FTB</b>	XK	2006 -	3300/130	PAM35DT	140.00	
KIA	series & vehicle notes	years	load kg	Part No.	price £	B cut
Sportage 4x4 Estate <b>FTB</b>	A553	Jun-95 - Dec-04	1800/70	PKIA3ADT*	140.00	
Sportage 2 4x4 Estate <b>FTB</b>	E555	2004 - 2008	1600/75	PKIA7DT	140.00	(s)
Sorento MPV Estate <b>FTB</b>	Mk1	Feb-03 - 2007	2800/112	PKIA4DT*	140.00	(s)
Sorento MPV Estate <b>FTB</b>	Mk2	2007 - 2010	2500/100	PKIA5DT	140.00	(s)
Sorento MPV Estate <b>FTB</b>	Mk3	2010 - 2012	2500/100	PKIA8DT	145.00	(s)
Sorento MPV Estate <b>FTB</b>	Mk4	2012 - 2015	2500/150	PKIA10DT	145.00	(g)
Soul Estate <b>FTB</b>		2009 - Dec-14	1750/50	PKIA9DT	140.00	
Sedona MPV Estate <b>FTB</b>		2000 - Jul-06	2000/80	PKIA6DT	140.00	(i)
LAND ROVER	series & vehicle notes	years	load kg	Part No.	price £	B cut
Freelander <b>FTB</b>	with fore & aft tow loop	1997 - Aug-00	2000/140	PRO17DT	140.00	
Freelander <b>FTB</b>	with transverse tow loop	Aug-00 - Jan-07	2000/140	PRO16DT	140.00	
Freelander 2 <b>FTB</b>		Dec-06 - Dec-12	2000/140	PRO20DT	145.00	
Freelander 2 <b>FTB</b>		Dec-12 -	2000/140	PRO22DT	145.00	
Discovery <b>FTB</b>		Nov-89 - Nov-98	3500/150	PRO12DT	140.00	(i)
Discovery 2 <b>FTB</b>		Nov-98 - 2005	3500/150	PRO14DT	140.00	
Discovery 2 <b>HD FTB</b>		Nov-98 - 2005	4500/250	PRO24DT	250.00	(v)
Discovery 3 and 4 <b>FTB</b>		2005 -	3500/150	PRO19DT	145.00	
Discovery 3 and 4 <b>HD FTB</b>		2005 -	4500/250	PRO23DT	250.00	(v)
Range Rover <b>FTB</b> inc. Vogue with air dam & nudge bar	"Classic"	Jun-70 - Aug-94	3500/150	PRO5DT*	135.00	
Range Rover 4x4 Estate <b>FTB</b>	P38 series 2	Sep-94 - Jan-02	3500/150	PRO13DT*	140.00	
Range Rover 4x4 Estate <b>FTB</b>	L322 series 3	Jan-02 - 2013	3500/150	PRO18DT	145.00	(s)
Range Rover Sport 4x4 Estate <b>FTB</b>		2005 -	3500/150	PRO19DT	145.00	(i)
Range Rover Evoque 4x4 Estate <b>FTB</b>		2011 -	1900/150	PRO25DT*	140.00	(i)
Land Rover <b>FTB</b>		1948 - 1984	3500/250	PRO6*	120.00	
Land Rover 90, 110, Defender <b>FTB</b>		Mar-83 -	3500/250	PRO9*	120.00	
Land Rover 90, 110, Defender <b>FTB</b>		Mar-83 -	3500/250	PRO9DT	140.00	
<b>LAND ROVER</b> Defender 90, 110, <b>HD FTB</b>		Mar-83 -	4500/250	PRO21ADT	250.00	
MAZDA	series & vehicle notes	years	load kg	Part No.	price £	B cut
B2500 2WD & 4x4 Pick-Up inc. Crew Cab <b>FTB</b>	UF1, UF8, UN8	1998 - 2012	2500/80	PMAZ39ADT	140.00	
B2500 2WD & 4x4 Pick-Up inc. Crew Cab <b>HD FTB</b>	UF1, UF8, UN8	1998 - 2012	4500/250	PMAZ44DT	250.00	
Bongo MPV (Special Import) <b>FTB</b>	SGL3, SGL5, SGL11, SGLW2	1992? - 2005	1800/75	PMAZ40DT	140.00	
MERCEDES	series & vehicle notes	years	load kg	Part No.	price £	B cut
M Class ML 4x4 Estate <b>FTB</b>	WDC163	Apr-98 - Oct-05	3000/135	PMB43DT	140.00	
V Class Vito & Viano <b>FTB</b>	WDF638	Oct-96 - Sep-03	2500/100	PMB42DT	140.00	
V Class Vito & Viano Van <b>FTB (Not 3.0l engine)</b>	WDF6369	2003 - 2010	2500/100	PMB45DT	140.00	
Sprinter Van & chassis cab <b>FTB</b>	200, 300, 400	1996 - Jun-05	3000/135	PVW58DT	150.00	
Sprinter Van & chassis cab <b>FTB</b>	200, 300, 400	Jul-06 -	3000/135	PMB44DT	140.00	
Sprinter Van & chassis cab <b>HD FTB</b>	200, 300, 400	Jul-06 - 2013	4500/250	PMB49DT	250.00	v
Sprinter Van & chassis cab <b>HD FTB</b>	200, 300, 400	2013 -	4500/250	PMB52DT	275.00	v
MITSUBISHI	series & vehicle notes	years	load kg	Part No.	price £	B cut
Outlander 4x4 Estate <b>FTB</b>	Centre receiver as standard. Can have LH added	Mar-07 -	2000/100	PC27DT	145.00	(s)
Shogun / Pajero 4x4 Estate <b>FTB</b>		1991 - 2000	3400/135	PCM46DT	140.00	(s)
Shogun / Pajero 4x4 Estate <b>FTB</b>	includes 2007 facelift	2000 -	3400/135	PCM49BDT	150.00	(s)
Shogun Sport 4x4 Estate <b>FTB</b>	K94	Nov-98 - 2007	2800/115	PCM56DT	145.00	
L200 Pick-UP inc. Warrior <b>FTB</b>	K12, K14, K22, K24, K74	1987 - Mar-06	2700/100	PCM50DT	140.00	
L200 Pick-UP inc. Warrior <b>HD FTB</b>	K12, K14, K22, K24, K74	1987 - 2006	4500/250	PCM62DT	250.00	
L200 Pick-UP inc. Warrior <b>FTB</b>	KB4T	Mar-06 - Aug-15	2700/100	PCM59DT	140.00	
L200 Pick-UP inc. Warrior <b>HD FTB</b>	KB4T	Mar-06 - Aug-15	4500/250	PCM61ADT	250.00	
L200 Pick-UP <b>FTB</b>	KL10	Sep-15 -	3100/125	PCM64DT	140.00	
L200 Pick-UP <b>HD FTB</b>	KL10	Sep-15 -	4500/250	PCM65DT	250.00	



Kia Sorento Mk3



Volvo XC90



Jeep Grand Cherokee Mk2 with additional centre receiver

# FRONT TOWBARS

This list is updated at regular intervals so if your vehicle is not listed please phone to check.  
For very unusual vehicles we can design, manufacture and fit a special towing bracket.

NISSAN	series & vehicle notes	years		load kg	Part No.	price £	B cut
Micra hatchback FTB	K12	2003	- 2007	600/50	PDSN106DT	120.00	(s)
X-Trail 4x4 Estate FTB	NT30	Oct-01	- Sep-07	2000/100	PDSN100DT	140.00	
X-Trail 4x4 Estate FTB		Aug-07	-	2200/100	PDSN117DT	140.00	
Qashqai 4x4 , 4x2 Estate FTB		Feb-07	-	1400/75	PDSN118DT	140.00	
Terrano II 4x4 Estate FTB	R20, R50	Jul-93	- 2002	2800/115	PDSN93DT	140.00	
Pathfinder 4x4 Estate FTB	R51	Feb-05	- 2010	3000/120	PDSN108DT	140.00	
Pathfinder 4x4 Estate FTB	R51	2010	-	3000/120	PDSN119DT	140.00	(l)
Patrol 4WD Estate FTB	160	Jan-82	- Apr-92	3500/140	DSN72	120.00	
Patrol 4x4 Estate FTB	Y61	Mar-98	- 2011	3500/140	PDSN105DT	140.00	
Patrol 4x4 Estate HD FTB	Y61	Mar-98	- 2011	4500/250	PDSN120DT	250.00	
Navara 4x4 Pick-up & Double Cab FTB	D22, D23	1998	- Jul-05	3000/100	PDSN103DT	140.00	
Navara 4x4 Pick-up & Double Cab HD FTB	D22, D23	1998	- Jul-05	4500/250	PDSN115DT	250.00	
Navara 4x4 Pick-up & Double Cab FTB	D40	Aug-05	- 2010	3000/120	PDSN109DT	140.00	(l)
Navara 4x4 Pick-up & Double Cab FTB	D40	2010	-	3000/120	PDSN119DT	140.00	(l)
Navara 4x4 Pick-up & Double Cab HD FTB	D40 inc. 2010 facelift	Aug-05	-	4500/250	PDSN116DT	250.00	
<b>PEUGEOT</b>							
307 SW Estate FTB		2002	- 2008	1500/73	PP44DT	145.00	(g)
406 Saloon & Estate FTB		Feb-96	- Mar-04	1300/80	PP37DT	145.00	
4007 4x4 Estate FTB	Centre receiver as standard. Can have LH added	Mar-07	-	2000/100	PC27DT(P)	145.00	(s)
Boxer Van & Chassis Cab FTB		1994	- Nov-06	2000/80	PP36ADT	150.00	
Boxer Van & Chassis Cab HD FTB	Centre receiver only - no LH or RH option	2007	-	4500/250	PP47DT	275.00	(g)
<b>RENAULT</b>							
Scenic MPV FTB		1996	- Sep-03	1000/75	PRN49DT	140.00	
Traffic Van FTB	Not 2.5l Diesel, Not with Air-con	Jul-01	-	2000/85	PRN47DT	150.00	(g)
<b>ROVER</b>							
75 Saloon & Estate FTB		1998	- 2005	1600/100	PR19DT*	140.00	(s)
825, 827 Saloon & H/back FTB	825, 827	Jul-86	- Oct-99	1500/80	PR20DT	140.00	
820 Saloon & H/back FTB	820	Jul-86	- Oct-99	1500/80	PR21DT	140.00	
<b>SAAB</b>							
900 Hatchback FTB	2	1993	- 2002	1600/75	PSB12DT*	140.00	(s)
95 Saloon & Estate FTB		1997	- 2010	1800/75	PSB13DT	150.00	(g)
<b>SEAT</b>							
Alhambra MPV FTB		1997	- 2010	1800/85	PVW59DT*	140.00	(g)
<b>SKODA</b>							
Octavia Hatchback & Estate FTB		Jul-04	- 2013	1500/75	PSK11DT	140.00	(g)
<b>SUBARU</b>							
Forester 4x4 Estate FTB	K74 with front tow loops	Sep-97	- Apr-02	1800/75	PSUB24DT	140.00	
Forester 4x4 Estate FTB	K43 with engine subframe (Not KE58)	Apr-02	- 2008	1800/75	PSUB22DT	140.00	(s)
Forester 4x4 Estate FTB	K23	May-08	-	2000/80	PSUB26DT	140.00	(g)
Legacy Outback 4x4 Estate FTB	EA3	1996	- Jan-04	1800/75	PSUB25DT	145.00	
Legacy Estate FTB	BP5	Oct-03	- 2009	1800/75	PSUB23DT	145.00	(s)
<b>SSANGYONG</b>							
Musso 4x4 Estate FTB		1995	- 1999	2800/75	PSY1DT	150.00	(s)
Rexton 4x4 Estate FTB		2002	- 2006	3500/140	PSY2DT	150.00	(s)
<b>SUZUKI</b>							
Jimny FTB	JB23, 33, 43, 53 - Asymmetrical front tow-loops	1998	-	750/75	PSUZ29DT	140.00	(v)
Jimny HD FTB	JB23, 33, 43, 53 - Asymmetrical front tow-loops	1998	-	2700/150	PSUZ27DT	250.00	(v)
SX4 S-Cross Estate FTB		2013	-	1500/75	PSUZ28DT	140.00	(i)
Vitara 4x4 5-door Estate FTB	D31	1991	- 1998	1500/75	PSUZ25DT	140.00	
Grand Vitara 4x4 Estate FTB	D62, X82	1998	- 2005	1500/75	PSUZ22ADT	140.00	(s)
Grand Vitara Mk2 4x4 Estate FTB	TA44	Nov-05	- 2010	1850/85	PSUZ26DT	145.00	(s)
<b>TOYOTA</b>							
RAV 4 Estate FTB	A21	Aug-00	- Aug-03	1500/75	PTY93DT	140.00	
RAV 4 Estate FTB	G20V	Sep-03	- Jan-06	1500/75	PTY97DT	140.00	
RAV 4 Estate FTB	B31V	Feb-06	- Jul-13	1500/75	PTY103DT	145.00	
Landcruiser 4x4 Estate FTB	J80 (NOT for SWB)	1990	- 1998	2800/130	PTY87DT	140.00	
Landcruiser 4x4 Estate FTB	J90, LC95	Aug-95	- Dec-02	2800/130	PTY94DT	140.00	
Landcruiser 4x4 Estate HD FTB	J90, LC95	Aug-95	- Dec-02	4500/250	PTY111DT	250.00	
Landcruiser 4x4 Estate FTB	J120 - Horizontal tow-loop only	2003	- 2009	2800/130	PTY88DT	140.00	
Landcruiser 4x4 Estate FTB	J120 & J150 - Horizontal & angled tow-loop	2003	-	2800/130	PTY112DT	150.00	
Landcruiser 4x4 Estate FTB	PTY112DT supercedes ref PTY88DT and fits both types of tow-loop						
Landcruiser 4x4 Estate HD FTB	J120 & J150 - Horizontal & Angled tow-loop	2003	-	4500/250	PTY110DT	250.00	
Amazon (Landcruiser) 4x4 Estate FTB	J100	Apr-98	- 2007	3500/140	PTY98DT	140.00	
HiLux 4x4 Pickup & Crewcab FTB	LN105	1989	- 2005	2800/130	PTY102DT	140.00	
HiLux 4x4 Pickup and Crew Cab HD FTB	N105	1998	- 2005	4500/250	PTY109DT	250.00	
HiLux & Vigo (special import) Pick-Up FTB	N25, N26, R29 inc. 2011 facelift	2005	-	3000/100	PTY96DT	140.00	
HiLux & Vigo (special import) Pick-Up HD FTB	N25, N26, R29 inc. 2011 facelift	2005	-	4500/250	PTY107DT	250.00	
Hi-Lux Surf 4x4 Estate (special import) FTB	KNZ185	1996	-	3000/100	PTY100DT	140.00	

# FRONT TOWBARS

This list is updated at regular intervals so if your vehicle is not listed please phone to check.  
For very unusual vehicles we can design, manufacture and fit a special towing bracket.

VAUXHALL	series & vehicle notes	years		load kg	Part No.	price £	B cut
Zafira MPV FTB		1999 -	Jun-05	1300/75	PG73DT	140.00	(l)
Zafira Mk2 MPV FTB		Jul-05 -		1300/75	PG75DT	140.00	(s)
Vectra Hatchback & Saloon FTB		Jun-02 -	2009	1600/75	PG74DT	150.00	(g)
Omega Saloon & Estate FTB		Apr-94 -	2003	1700/85	PG72DT	140.00	
Monterey 4x4 Estate FTB	UBS25 with 525mm subframe width	Mar-92 -	Apr-98	3300/120	PIZU18DT	140.00	
Monterey 4x4 Estate FTB	USB5	May-98 -	2003	3300/120	PIZU8DT	140.00	
Frontera Estate & Sport FTB	for vehicles without nudge bars	Nov-91 -	Oct-98	2800/112	PG66DT	140.00	
Frontera 4x4 Estate FTB	06B	Oct-98 -	2004	2800/112	PG70DT	140.00	
Vivaro (NOT 2.5 Diesel) FTB		Jul-01 -		2000/85	PRN47DT	150.00	(g)
Brava Pick-Up 4x4 & Crew Cab FTB	TFR, TFS	Oct-88 -	2002	3300/121	PIZU14DT	140.00	
<b>VOLKSWAGEN</b>	<b>series &amp; vehicle notes</b>	<b>years</b>		<b>load kg</b>	<b>Part No.</b>	<b>price £</b>	<b>B cut</b>
Golf 5 hatchback FTB	5	Jan-04 -	2009	1910/75	PVW57DT	140.00	(g)
Passat Saloon & Estate FTB		1997 -	May-05	1800/85	PVW53DT	140.00	(g)
Sharan MPV FTB		2000 -	2006	2100/85	PVW59DT*	140.00	(g)
Tiguan with 'off-road bumper' FTB		2008 -			PVW62DT	140.00	
Touareg 4x4 Estate FTB		Jun-03 -	2010	3500/140	PVW56DT	150.00	(g)
Touareg 4x4 Estate FTB		2010 -		3500/140	PVW65DT	140.00	(g)
Transporter, Microbus Van & Chassis Cab FTB	T4	Jan-91 -	Jun-03		DISCONTINUED		
Transporter Van, Caravelle, Microbus FTB	T5	Aug-03 -	2015	2500/100	PVW55DT	145.00	
Transporter Van, Caravelle, Microbus HD FTB	T5	Aug-03 -	2015	4500/250	PVW66DT	275.00	
LT Van & chassis cab FTB	28, 35, 46	1996 -	2006	3000/135	PVW58DT	150.00	
Amarok Pick-up Single & Double Cab FTB		2011 -		2800/120	PVW64DT	150.00	
Amarok Pick-up Single & Double Cab HD FTB		2011 -		4500/250	PVW63DT	275.00	
<b>VOLVO</b>	<b>series &amp; vehicle notes</b>	<b>years</b>		<b>load kg</b>	<b>Part No.</b>	<b>price £</b>	<b>B cut</b>
740,760 & 940,960 Saloon & Estate FTB		Jul-82 -	1998	1600/75	PVL19DT	140.00	(s)
V70 Estate FTB	Not with front fog lights & Air Con.	2000 -	2006	1800/75	PVL20DT	140.00	(g)
XC90 FTB		2003 -	2015	2250/90	PVL21DT	140.00	

**Please add VAT to prices on this list.** Part numbers with a DT suffix have a detachable section to provide a neat appearance  
**Key:** B cut = bumper cut (i) = invisible cut in the bumper (v) = visible cut in the bumper (g) = cut in the bumper grill (s) = cut in the sump shield Load kg = max trailer weight/nose weight  
 \* = centre receiver option not available FTB = Standard Front Towbar HD FTB = Heavy Duty Front towbar **TYPE APPROVAL EC/94/20:** The regulations DO NOT APPLY to:-  
 Commercial Vehicles, Motorhomes registered before May 2012, Cars not (e) marked, Special Imports (SVA), Front Towbars, and All Vehicles registered before 1st. August 1998

## FRONT TOWBAR USES AND OPTIONS



WINCH MOUNTS



ADDITIONAL RECEIVERS



ADDITIONAL SUPPORT FOR LONG ITEMS



REALLY BIG BOATS



WINTER EQUIPMENT



MOVING CARAVANS

